



MARIDIVE
OFFSHORE
PROJECTS



Table of Contents

1 Company Overview

2 Company History

3 Maridive Group

4 Vision

6 Key Milestones

7 Regional Presence

10 Our Services

11 New Division

12 Our Assets

13 Project Profiles

14 Clients

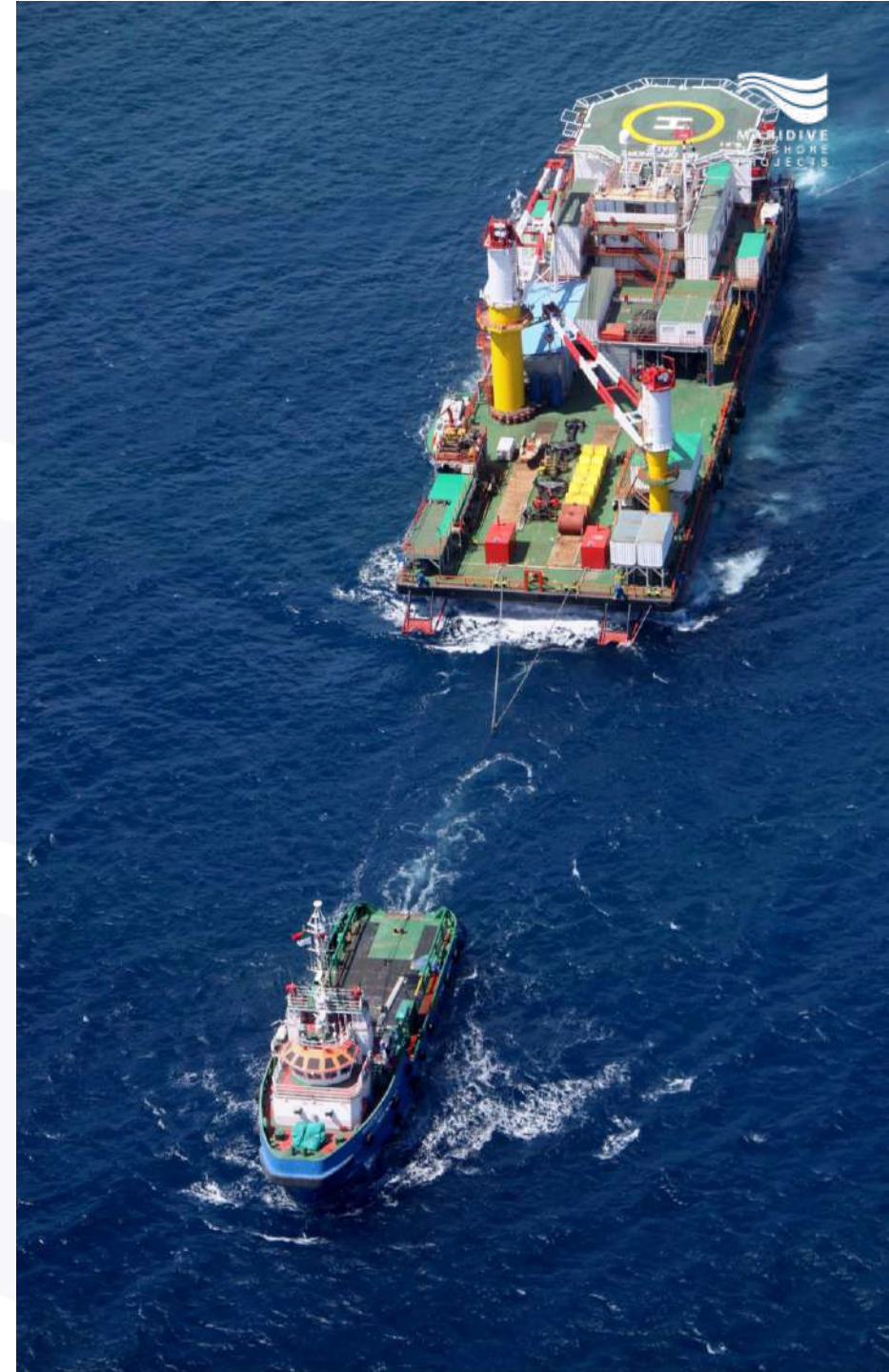
**15 Awards and
Certifications**

**16 Client's
Testimonials**

— Company Overview

Maridive Offshore Projects (“MOP”) is a leading infrastructure solutions provider, delivering any offshore projects on a turnkey basis.

By combining engineering, equipment and Project Management expertise we are able to tailor the design of the infrastructure to fit the Client’s Budget and Technical Constraints.



Company History

MOP is a subsidiary of the Maridive Group which was established in 1978 by Zeid, Eleish and Nadim Families. Other shareholders include EFG Hermes, Commercial International Bank (CIB) while the balance is listed on the Egyptian Stock Exchange.

The establishment of MOP came as the market need arose to supplement the Group's fleet with integrated engineering, survey and diving personnel who can operate and maintain offshore infrastructure. The Management of MOP decided to build this team of Divers by only recruiting engineers to problem solve and thereby save significantly on delivering projects. This Problem solving culture grew to become at the core of who we are



Maridive Group



MARIDIVE & OIL
SERVICES (MOS)

Is the mother company, founded in 1978 as a Free Zone Joint Stock Company; its official headquarters are located in Port Said, with offices in Cairo and Alexandria. The aim of MOS was meeting Egypt's requirements of marine and offshore services with fully trained Egyptian caliber's.



MARITIDE
OFFSHORE OIL
SERVICES

Was originally established in 1987 as a Free Zone Joint Venture Company between MOS and Tidewater Marine to increase the capacity and number of Marine Units operated by MOS. In 2001, MOS purchased Tidewater Marine share, and Maritide, with all its assets, its now fully fully controlled by Maridive & Oil Services



MARIDIVE
OFFSHORE
PROJECTS (MOP)

Was established in 1993 as a Free Zone Company. MOP is MOS' sister company, that provides infrastructure solutions, and delivers any offshore projects on a turnkey basis.



OCEAN MARINE

Was Incorporated in 2013 in the United Arab Emirates (UAE) and is a subsidiary of Maridive Group. The company is specialized in Offshore Support Vessels (OSV), producing commercial activities and maritime services.



VALENTINE
MARITIME LTD

Was incorporated in 1990 as a Limited Liability Company. Valentine is specialized in offshore construction, fabrication and marine works. Valentine has mainly operated in the Arabian Gulf, with successful large scale projects in countries such as the UAE, Qatar, and Kuwait to name a few.

Vision

“To become the global leader as an offshore solutions provider”



— Key Milestones

1993

Establishment of MOP

First Underwater Hot Tapping
Project in the Middle East

1998

Laying of First Coiled Tube
in Egypt

Restructuring efforts begin
severe cost cutting leading to
first profitable year after half a
decade of losses

2018

MOP Delivers EPPC,
our first BOT Turn-
key Project

1994

First Contract in the
GCC

Launch of Survey
Department

2005



2016

Entry of New
Management

2016

Laying of First
Threaded Pipe in Egypt

Regional Presence

-  Offices
-  Projects



Our Services

Projects

Services



Project Management Office (PMO)

- Value Engineering
- Installation Engineering
- Design Management
- Conceptual Design
- Turnkey Solutions

Offshore Construction

- Offshore Pipelaying
- Mooring Systems Installation
- Offshore Cable Laying
- Ports & Jetties Construction
- Offshore Structure Supply & Installation

Onshore Construction

- Steel Structures
- Piping & Tanks Fabrication
- Civil & Mechanical Works connected to offshore infrastructure

Maintenance

- Asset Integrity Management
- Inspection, Maintenance & Repair (IMR)
- FM Digital Manual Platform
- Equipment & Fleet Management

Surveying

- ROV Inspection Services
- Platforms site investigation surveys
- Geotechnical & Hydrographic Surveys
- Anchor Handling
- Rig Positioning

Diving

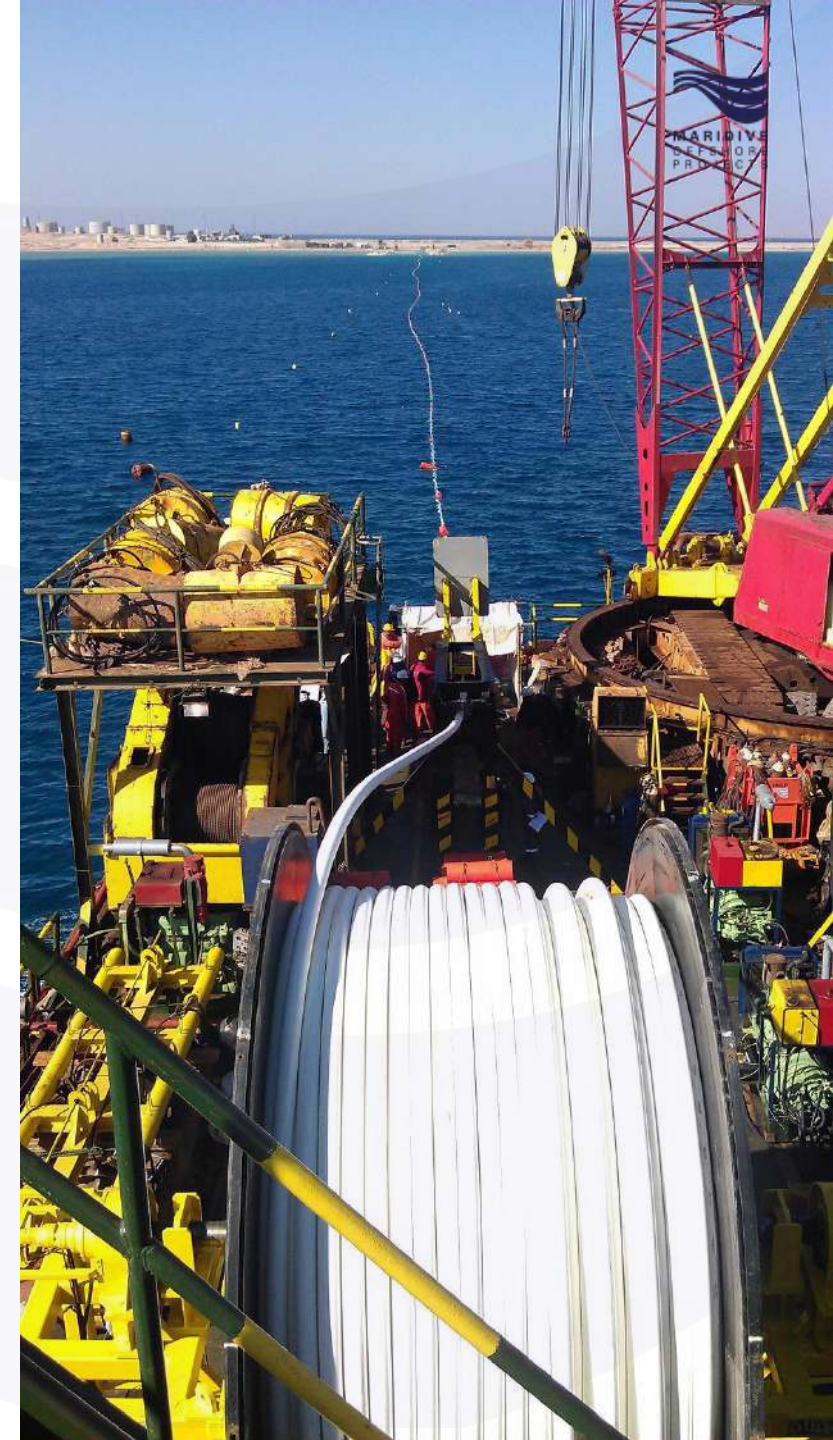
- Hot tapping
- Underwater welding and Cutting
- Loading Terminal Maintenance
- Non-Destructive Testing
- Underwater Repairs

Scope of Services

Project Management Office (PMO)

MOP has developed its own in-house resources to manage design firms and also supply each project with its installation engineering requirements as per the latest international rules & standards in the offshore field. Such engineering allows the budgets to be shrunk significantly and hence provide CAPEX savings to the Client as well as OPEX savings taken into consideration.

By choosing between a plethora of installation methodologies, the team is able to value engineer a project and tailor the detailed design to suit the project budget.



Scope of Services

Offshore Construction Work

In addition to our extensive Construction Management expertise, we also self perform specialty work. We also seamlessly manage our subcontractors/partners to deliver timely and on-budget projects. This balance allows us to minimize our overheads while maintaining our expertise and market dominance to deliver all infrastructure such as platforms, modifications, deck extensions, boat landings, constructor guides, riser guards, piping work, hook up works & tie installation, plem fabrication/installation/ maintenance & repair.



Scope of Services

Offshore Pipelaying

We lay infrastructure that transports energy, water and/or data in the sea and also ensure perfect integrity. The pipelines and cables we lay have different properties and dimensions and each process requires our engineers to challenge each other to obtain faster rates and more economical solutions

MOP offers material procurement, submarine cables shore pulling normal laying, J-tube fabrication & offshore installation, shore approach preparation including pre and post trenching activities, tie installation including risers, spools, topside, etc. MOP also offers stabilization & free span correction, pre commissioning including hydro tests, pigging, gauging, dewatering, nitrogen, purging, etc. as well as site acceptance tests (SAT)



Scope of Services

Mooring Systems Installation

Mooring Systems allow tankers to offload product more easily in the sea without onshore restriction. We have built a range of diverse mooring systems to suit each project and Client requirements with solutions such as Single Point Mooring (SPM) installation & maintenance, conventional six points mooring systems fabrication & installation, as well as mooring accessories procurement & installation (anchor, chains, buoys, etc.)

Scope of Services

Onshore Construction

We not only build offshore but any work required to connect the offshore infrastructure to the Onshore, we will deliver. This construction work includes mechanical works installation, piping fabrication & erection, steel structure fabrication & erection, steel tanks fabrication & erection, operation & maintenance of mechanical and electrical systems, as well as civil works.

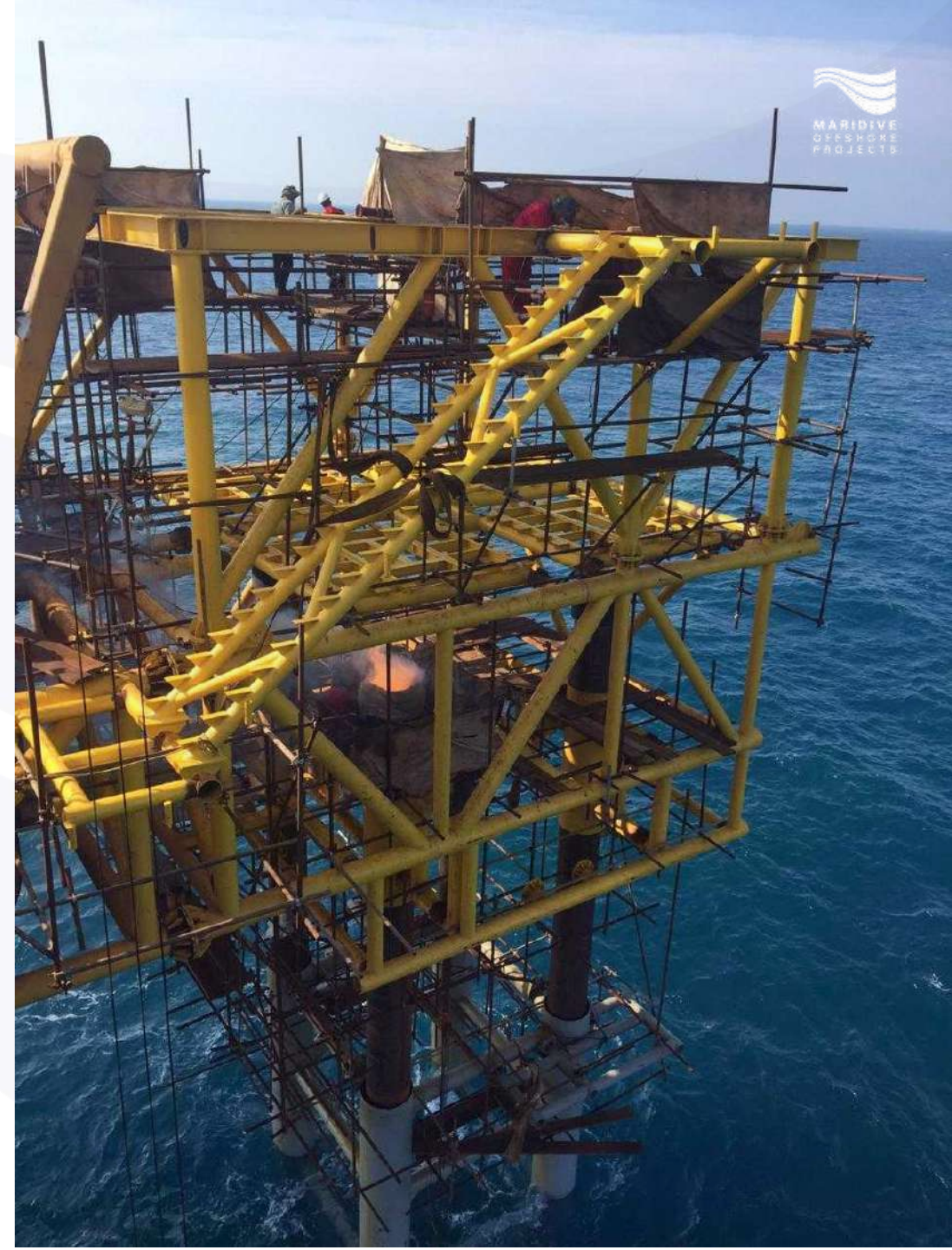


Scope of Services

Maintenance & Repair Work

Our strength lies in the long term Inspection & Maintenance contracts. Those contracts have allowed us to accumulate a wealth of data which is currently being analyzed using our team of engineers. We are currently working on a project to utilize machine learning to analyze this data and significantly optimize all project expenditures which allows us to control our risk on long term BOO projects and control all OPEX in the future.

Submarine power cables repairs, equipment & fleet management, topside maintenance, sandblasting & painting, structures modifications, piping modification.



Scope of Services

Offshore Surveying

Before any offshore work is done, surveyors must ensure the conditions allow for it. Using internal softwares and new technologies, our team of surveyors are an essential key to the design process but also the construction team. Our Remotely Operated Vehicles (ROV's) and other equipment collect continual data which has given us an edge over other firms operating in the region to more efficiently deliver infrastructure.

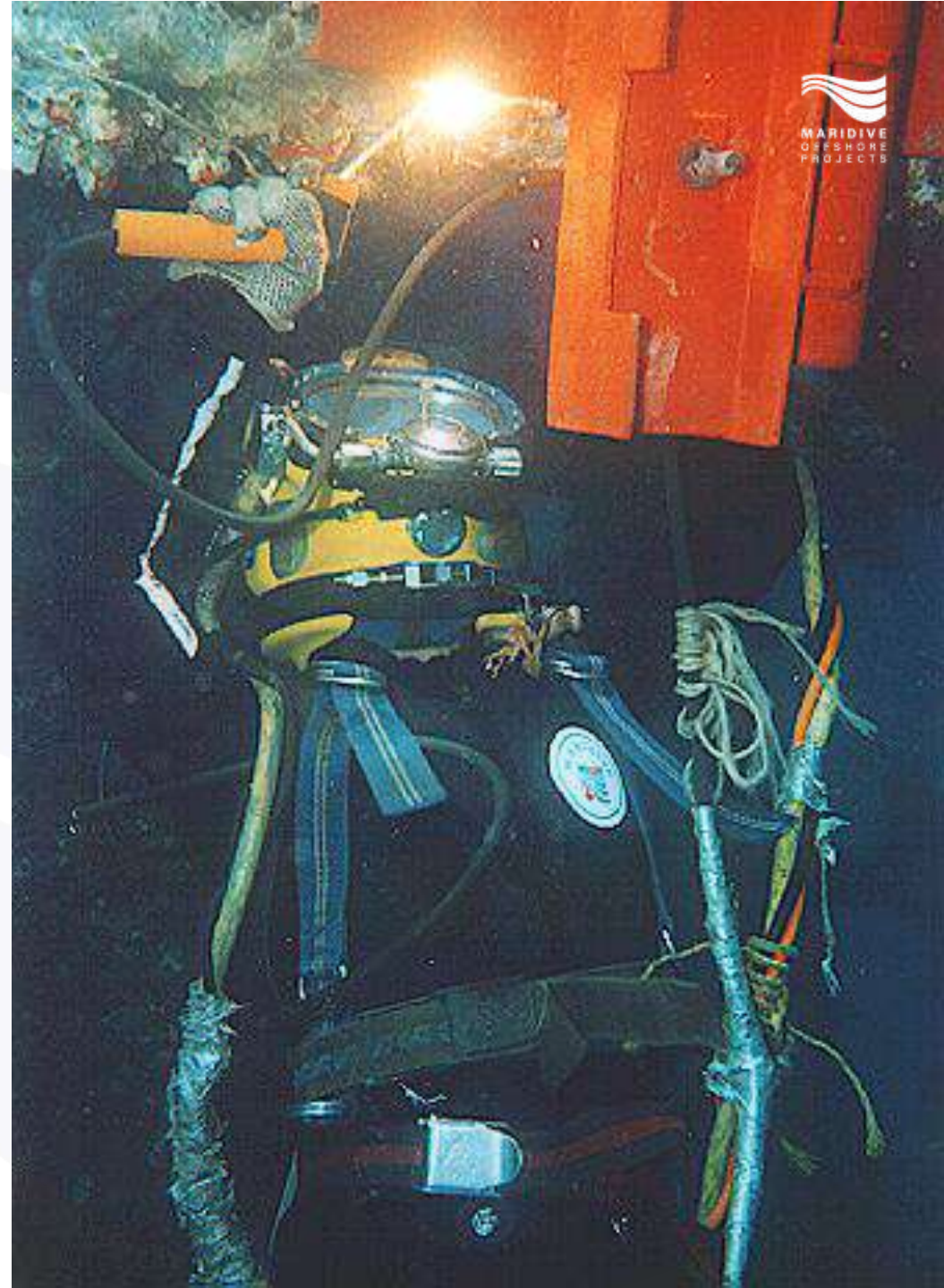
The team's expertise is used during rig moves and laying barge positioning, template, platforms and pipeline, installations, positioning services, underwater acoustic positioning (USBL), geodetic control establishment/leveling, pre-engineering geophysical offshore survey, pipelines, marine cables & umbilical as-laid & as-built surveys, rig and platforms site investigation surveys, geotechnical survey service.



Scope of Services

Diving Work

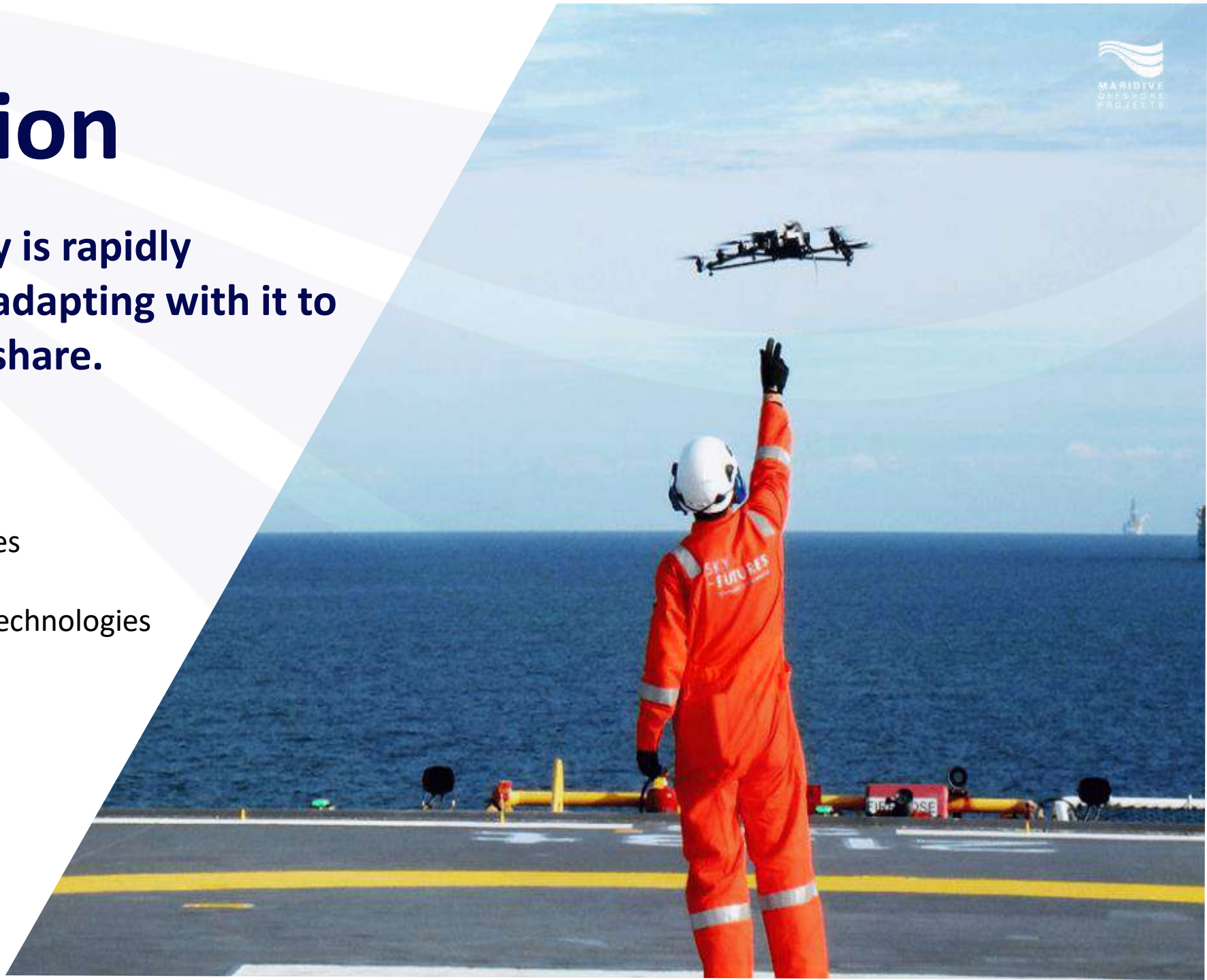
One of Maridive's key strengths is that all our Divers are engineers. They are the underwater problem solvers with perfect teamwork. Managed by the Diving supervisor, a team of 5 divers on any given project maintain continual operation by rotating without being underwater for too long. The most complex of projects excite our team with all tasks including Hot tapping installation of mechanical connectors on live pipelines, cold cutting of sub sea pipelines, IMR inspection program, under water welding and cutting, SBM installation, subsea hoses installation and tie in, slash zone coating (marine growth removal), subsea (not under water), magnetic particle inspection (MPI), close visual inspection, ultra sonic inspection (UT), flooded member & thickness measurement,.



New Division

The Oil & Gas industry is rapidly changing and we are adapting with it to maintain our market share.

- UAV “Drone” Inspection
- Port Management Services
- Proprietary Pipe-Laying Technologies
- Labour Supply Company



Our Assets



DLB 1600



Offshore Base



**DLB Maridive
Constructor**



MD 300

<u>Cranage</u>	1,600 T	40 T	300 T	110 T
<u>Boom Length</u>	85 m		50 m	52 m
<u>Mooring</u>	10 pt.	8 pt.	8 pt.	8 pt.
<u>Accommodation</u>	300	120	250	134
<u>Year</u>	2013	2014	2009	2009
<u>Free Deck Space</u>	1,500 m2	750 m2	1,600 m2	450 m2

Other Assets

Surveying Equipment

- Positioning support for offshore operations including: Rig moves, Laying Barges, Diving support vessels and any offshore construction operations.
- Pre-engineering geophysical survey for pipelines/ submarine cables installations.
- Geotechnical survey services including soil sampling and laboratory testing.
- Rig and platforms site investigation surveys.
- ROV inspection services.
- Hydrographic Surveys.



Other Assets



Fabrication Yard

To better assist our construction operations, our company owns and operates several yards in the Middle East Region. This gives us a competitive advantage against other companies.

- Fabrication yard in Egypt
- Fabrication yard in UAE

Diving Equipment

- 12 man chamber-suitable for 24hrs working up to 300m water depth
- Decompression Chambers
- Scuba Replacement Systems
- Portable Communicators
- Air Compressors
- Ultrasonic Thickness Gauges
- Bathycorrometer
- MPI's
- CCTV's



Saturation System

Project Profile 1 – NOSPCO

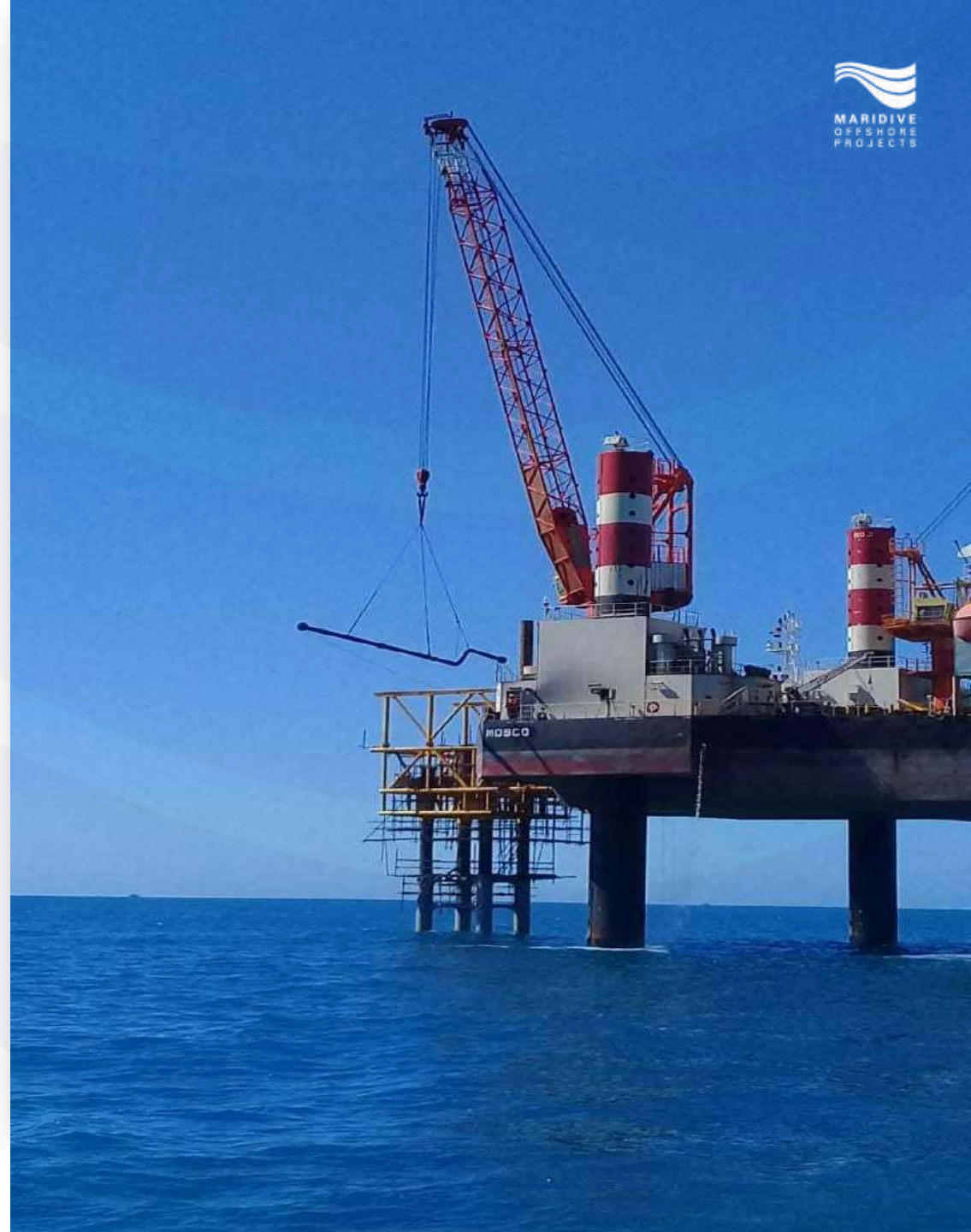
Supply, Fabrication and Installation for TOP Sides Mechanical

Project Overview

NOSPCO planned to boost the production from its offshore fields in the Mediterranean sea through the development of Kamose field and installing an offshore production unit.

Maridive Offshore Projects offered to Supply, Fabricate, and Install Topsides Facilities where Kamose wellhead platform is. We're proud to be trusted by NOSPCO with a large scale project like this where MOP will develop Kamose for further exploitation of the Natural Gas leases. Kamose field is approximately 60km north of Rommana and North Western Sinai.

Maridive Offshore Projects is providing Kamose with its MOPU (Mobile Offshore Production Unit) to develop NOSPCO wellhead platform with all its jack-ups, barges, working decks, to be re-used for the production of Natural Gas.



Project Profile 1 – NOSPCO

Supply, Fabrication and Installation for TOP Sides Mechanical

Key Challenges

Nospco realized that due to their marginal field layout, each well had a lifetime of only **3 Years** which made it economically infeasible to produce considering their fixed infrastructure plan.

MOP proposed that instead of a permanent platform at each location, the team would convert an existing jack-up barge to a Mobile Offshore Production Unit (MOPU). In addition, instead of building an entire 60km pipeline to connect the new production wells, MOP conducted a critical operation using Hot Tapping Technology to tie-back to an existing infrastructure. This solution reduced **the CAPEX to 1/3** of the original plan and hence the project became feasible

Currently, this new conceptual infrastructure design is being studied and adopted across most marginal players in the Egyptian Market due to the instant success of this model.



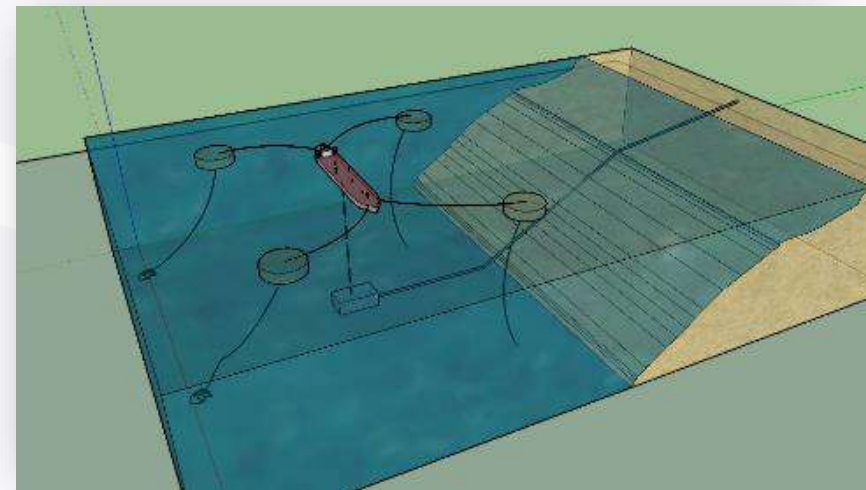
Project Profile 2– EPPC

EPPC - Berth Operation & Maintenance

Project Overview

Egyptian Propylene & Poly-propylene Company (EPPC) was facing a huge challenge getting their raw materials of Propylene and Poly-propylene to their factory in Port Said. The used channel was Sea cargo loaded and stored into tanks at Damietta Port, followed by transport via Government pipeline (tariff fees) to the factory. This implied tremendous OPEX per metric ton of raw material and negatively impacted their business plan.

Maridive Offshore Projects offered EPPC a complete solution from its ideation to its operation and maintenance. The solution was to build an offshore mooring terminal to offload each Ship Cargo directly into a Pipeline straight from the Sea to EPPC Factory. The net effect was a Capex ROI of **4 Years** and an annual logistics OPEX saving of **90%**.



Project Profile 3 – KJO

Survey and Inspection for Offshore Facilities

Project Overview

Maridive Offshore Projects has carried out above and under water inspection for Marine Facilities Structures at Al Khafji field.

The inspection program encompasses all underwater and surface parts of the structure. The structure was divided into surface or atmospheric zone, the tidal, the splash and submerged zones.

The inspection program is inclusive of the seabed around the structure, all structural members, nodes and welds, as well as the attachments to them, from seabed level to Top Deck. All handrails and boat landing; Monel sheathing and stair cases is included in the inspection.

Surface and diver inspectors utilized our diving support vessel DSV (Diving Support Vessel), Maridive 36, which performed the inspection.



Project Profile 4– GUPCO

28” HDPE Pipeline For Desalination Plant (LoSal Project)

Project Overview

Gulf of Suez petroleum Company (GUPCO) intended to place a new desalination plant at Ras Shukair at the Suez Gulf of the Red Sea in Egypt. We were responsible for the laying of 28” HDPE outfall pipeline. The plant capacity proposed to be 40,000 m³/day, the total withdrawal water was designed to be 110,000 m³/day and the effluent brine discharge of plant will be 70,000 m³/day. This project contained Engineering, design, construction, and installation of SWRO (Sea and Brackish Water Reverse Osmosis) Plant BOO (Build, Own, Operate) Basis.



Key Challenges

- 1) Weather predictions
- 2) Small window to pull the pipeline
- 3) Limited onshore space for preparations



Clients



Awards & Certifications

Maridive global technical certifications and qualifications ensure that our clients will receive the best service including all associated warranties.



International Standard Organization
"ISO 9001, 14001, 18001"
Since 1996



International Pipe Line & Offshore Contractors
Member
"IPLOCA"
Since 1996



International Marine Contractor Association
Member
Since 1999



International Safety Management Certificate
"ISM"
Since 1999



International Salvage Union
Member
Since 2003



International Ship and Port Security Signatory
"ISPS"
Since 2004



D&B Rating Certificate
"H3"
Since 2007



OHSAS 18001:2007

Clients Testimonials

TO: MASTER OF BARGE MARIDIVE -300.

Myself and all AMAPETCO team on board really appreciated the great efforts of your teams during execution the offshore activities (AMAL-A BOATLANDING REPLACEMENT PROJECT) during the period from 9/6/2012



SUBJ. : LAYING 1500 M OF PFSW-2 SEALINE.BY MARIDIVE MD 232

Ref to the above mentioned subject and the successful work completion with respect to the following activities using the Vessel **Maridive MD232** :

- The well preparation of the laying activities of the sea line portion (length **1500 MT** , size **4 ½ "**), in terms of technical work analysis , laying procedure issue , sequence of the work execution which resulted in smooth & successful laying operation and successful sea line testing as well in short time .



Clients Testimonials

نتقدم الشركة المصرية البحرينية لمشتقات الغاز وإدارة العمليات بمنطقة رأس شقير بخالص الشكر والتقدير لشركتكم على المجهود المتميز الذي تقدمه في مجال الغطس عن طريق فريق غطس محترف ومتميز خلال فترات شحن ناقلات تصدير البروبان الخاصة بشركتنا من ميناء 4 برأس شقير وذلك منذ أكتوبر 2012 حتى الآن.
من خالص تمنياتنا لشركتكم الموقرة بدوام التقدم والرفق.

"Thank you for your great work—on this project and in all that you do for our (ASHTART Revamping project) your contributions makes a real difference!"

Also we would like to thank you for your effort to activate the HSE standards and Polices as per SEREPT & MARIDIVE requirements.



— Contacts

Address 37, Corniche El Nil Maadi, Cairo

Phone (+202) 2358 5204

Email Commercial@Maridiveprojects.com

Website www.maridivegroup.net